

2 FREE MASONRY WEBINARS PRESENTED BY INDUSTRY EXPERTS

EMAIL jboyer@pacma.com
TO REGISTER
FOR MORE INFORMATION VISIT
PACMA.COM

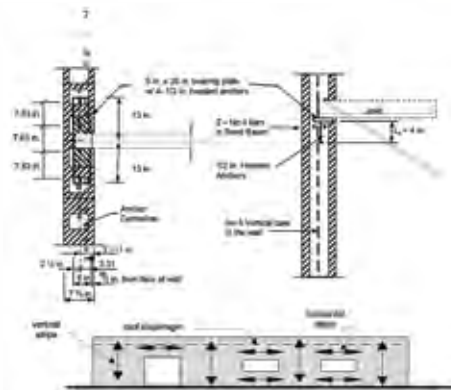


■ THURS., NOV. 3, 2022 - 1PM–2PM ET

MASONRY STRUCTURAL DESIGN TIPS (1 AIA/CES LU HSW | 0.1 ICC CEU)

By W. Mark McGinley, Ph.D, PE, FASTM - *Professor and Endowed Chair for Infrastructure Research, Civil and Environmental Engineering, J.B. Speed School of Engineering University of Louisville*

The webinar will highlight how to design masonry walls to resist typical loading, with a focus on out-of-plane behavior. How openings influence out of plane and in-plane load distribution will also be discussed. Also addressed are the factors that can influence the walls resistance and design choices that can minimize costs.



■ THURS., DEC. 8, 2022 - 11AM–NOON ET

IMPACT OF CONSTRUCTION TYPE ON INITIAL COST AND ONGOING BUILDING INSURANCE BASED ON INDEPENDENT STUDY OF MULTI-RESIDENTIAL STRUCTURES

(1 AIA/CES LU HSW | 0.1 ICC CEU)

By Walter G. M. Schneider III, Ph.D., P.E., CBO, MCP, CFO, MiFireE, FASCE

This presentation looks at building type as it relates to fire safe and resilient construction referencing the three systems of determination: International Building Code, National Fire Protection Association, and Insurance Services Office and the significant differences between them. Examples of multi-residential fires and the fire-fighting of these structures will be highlighted along with discussion of appropriate structure design to mitigate. The results of an independent study of multi-residential construction methods, including multiple systems utilizing cementitious-based materials, light steel frame, and light wood frame will be reviewed. The study evaluates the cost of construction, builders' risk insurance and evaluates the anticipated cost of building insurance based on the building construction type use.



2 FREE



MASONRY WEBINARS!

**November 3rd &
December 8th 2022**

EMAIL **jboyer@pacma.com** TO SIGN UP
VISIT **PACMA.COM** FOR INFORMATION



PO BOX 4
LEBANON, PA 17042
717-279-6346
jboyer@pacma.com

Return Service Requested

The PCMA website pacma.com features a listing of producer members and their contact information along with the products each produces. You'll also find information on education opportunities, local publications and more. © 2022 Pennsylvania Concrete Masonry Association

■ Concrete Block ■ Segmental Retaining Wall ■ Pavers

www.pacma.com

PCMA