

PCMA MASONRY *tip*

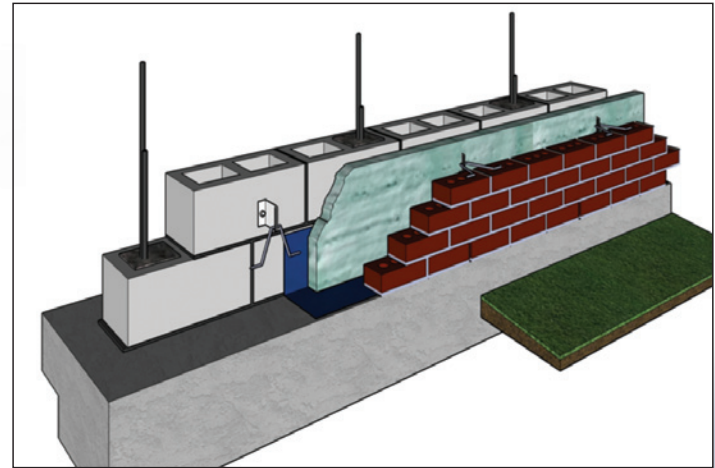
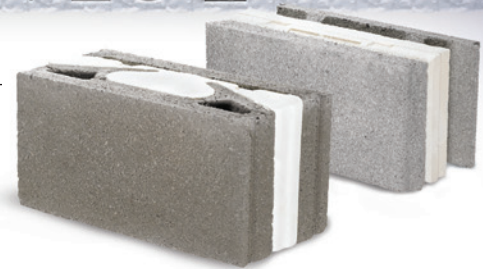
DO CONCRETE MASONRY WALLS REQUIRE CONTINUOUS INSULATION? NO.

This is a common misconception.

The IECC allows three different methods to be used to show compliance with minimum energy efficiency requirements: prescriptive, trade-off or system performance, and whole building energy analysis. A project need only comply with one of these methods, not all three.

Technical References at www.ncma.org:

- NCMA TEK 6-1C, 2013, "R-Values of Multi-Wythe Concrete Masonry Walls"
- NCMA TEK 6-2C, 2013, "R-Values and U-Factors of Single Wythe Concrete Masonry Walls"
- "Thermal Catalog of Concrete Masonry Assemblies, 2nd Edition," 2012
- NCMA FAQ 13-14, 2014, "What options are available for complying with the International Energy Conservation Code?"

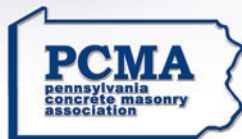




Although one particular compliance path (IECC Table C402.2) requires insulation to be continuous, there are several other options in the International Energy Conservation Code (IECC) that do not require continuous insulation.



The PCMA website www.pacma.com features a listing of producer members and their contact information and more.



813 Chestnut Street
Lebanon, PA 17042
717-279-6346
jboyer@pacma.com

Diverse Sustainable Solutions

Return Service Requested