

PCMA MASONRY tip

FREE MASONRY WEBINARS PRESENTED BY INDUSTRY EXPERTS

EMAIL jboyer@pacma.com
TO REGISTER

FOR MORE INFORMATION VISIT
WWW.PACMA.COM

✦ W. Mark McGinley, PhD, PE, F.TMS, F.ASTM ~ *Professor and Endowed Chair for Infrastructure, Research, Civil and Environmental Engineering, J.R. Speed School of Engineering – University of Louisville.*

■ **JUNE 22, 2016 - 11AM ET**

COST EFFECTIVE ENERGY EFFICIENT DESIGN FOR SINGLE WYTHE MASONRY BUILDINGS (1 AIA/CES LU HSW)

“How to Get More Bang For Your Buck” An overview of a recent study that addresses the energy efficient design of single wythe walls and how to meet energy code requirements in a more cost effective manner than externally applied insulation.

✦ Jamie Farny ~ *Director, Building Marketing Portland Cement Association*

■ **AUGUST 3, 2016 - 11AM ET**

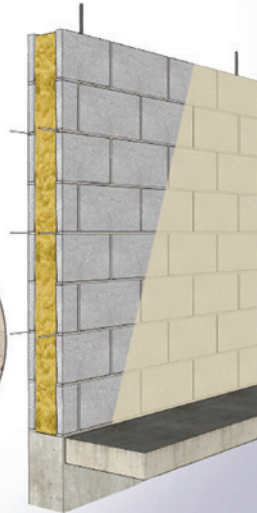
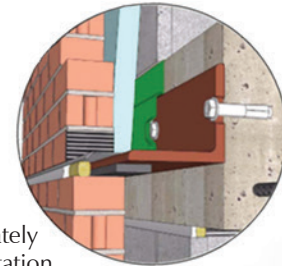
EFFECTIVE MORTAR SPECIFICATIONS (1 AIA/CES LU HSW)

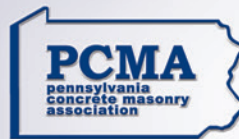
Mortar serves many purposes and has requirements for both fresh and hardened properties. Appropriately specifying and testing mortars not only saves time, it can result in better masonry projects. This presentation offers an understanding of cement-based mortars to support efficient design and yield effective results.

■ **SEPTEMBER 28, 2016 - 11AM ET**

DESIGN OF SHELF ANGLES FOR MASONRY VENEERS (1 AIA/CES LU HSW)

Understand proper design for the vertical support of masonry veneers including a number of design examples for proper shelf angle supports.





PO Box 4
Lebanon, PA 17042
717-279-6346
jboyer@pacma.com



Earn AIA Credits!

3 FREE MASONRY WEBINARS!

**June 22nd ■ August 3rd
& September 28th 2016**

EMAIL jboyer@pacma.com TO SIGN UP
VISIT WWW.PACMA.COM FOR INFORMATION

Return Service Requested

The PCMA website www.pacma.com features a listing of producer members and their contact information along with the products each produces. You'll also find information on education opportunities, local publications and more. © 2016 Pennsylvania Concrete Masonry Association

Diverse Sustainable Solutions

www.pacma.com

PCMA