

PCMA MASONRY *tip*

CLAY BRICK BANDING into CONCRETE MASONRY

Combining masonry units of various sizes, colors and finishes provides an aesthetic versatility that is virtually endless.

⊞ ACCOMMODATE ANTICIPATED MOVEMENT

Concrete masonry shrinks and clay brick expands

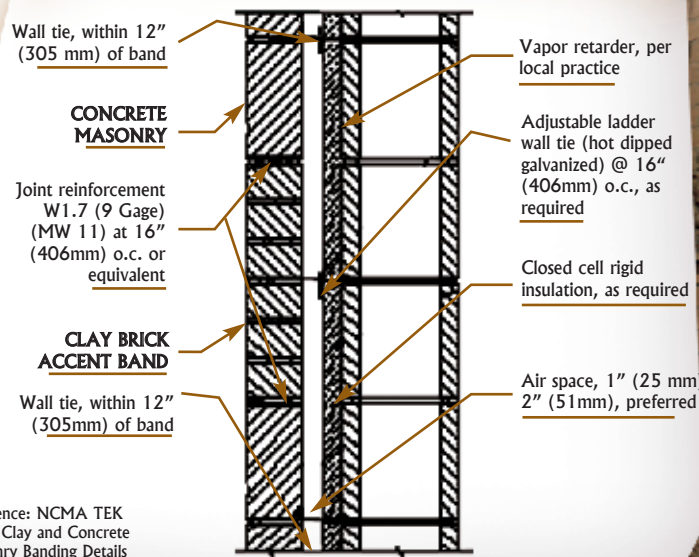
⊞ PROVIDE SUPPORT

Use joint reinforcement

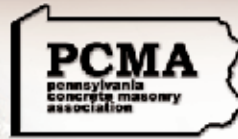
⊞ USE TYPE N MORTAR

If cracking occurs it will hopefully take place in the mortar joint and not the masonry units

MULTI-COURSE CLAY BRICK BAND IN CONCRETE MASONRY VENEER



Reference: NCMA TEK
5-2A Clay and Concrete
Masonry Banding Details



PO Box 4
Lebanon, PA 17042
717-279-6346
Executive Director, Jan Boyer
jlboyer@nbn.net

✦ **BANDS OF BOTH CONCRETE MASONRY AND
CLAY BRICK UNITS ADD ARCHITECTURAL INTEREST.** ✦

Technical information regarding concrete masonry is available through the National Concrete Masonry Association (NCMA). You can access this information any time on line from the home page of the Pennsylvania Concrete Masonry Association (PCMA) website www.pacma.com or through the NCMA website www.ncma.org.

The PCMA website, features a listing of the producer members in Pennsylvania by location with contact information. The site also includes a listing of products and the producer members who can provide these products for you.

www.pacma.com

PCMA